

VIDEOS IN CLINICAL MEDICINE

SUMMARY POINTS

Ultrasound-Guided Peripheral IV Placement

Scott Joing, M.D., Seth Strote, M.D., Liberty Caroon, R.D.M.S., Christopher Wall, M.D.,
 Jamie Hess, M.D., Chad Roline, M.D., Laura Oh, M.D., Ben Dolan, B.A.,
 Robb Poutre, Kathleen Carney, R.N., David Plummer, M.D.,
 and Robert Reardon, M.D.

The following text provides a summary of the teaching points that appear in the video.

OVERVIEW

Placement of peripheral intravenous (IV) catheters is a fundamental skill that all health care professionals should possess. Unfortunately, it can be difficult to obtain IV access in some patients, including obese patients, children, and patients who have undergone placement of many IVs or who have a history of difficult IV access. Ultrasound guidance enables visualization of veins that are not apparent on physical examination, resulting in fewer needlesticks, more rapid cannulation, and less discomfort in patients with difficult IV access.¹⁻³ Ultrasound-guided IV placement is indicated when it is difficult or impossible to use traditional techniques. There is no contraindication to ultrasound-guided IV placement, but it is unnecessary when traditional techniques are sufficient. Health care providers who are proficient in standard placement techniques will find it relatively easy to learn ultrasound-guided techniques.

There are two common approaches to the position of the transducer during ultrasound-guided placement of IV catheters: transverse and longitudinal. The transverse approach is easier to learn, but the longitudinal approach is preferred by many experienced providers because it allows better visualization of the needle.^{4,5} It is best to learn both techniques. Potential cannulation sites are the hand, the antecubital veins of the forearm, and the basilic, cephalic, and brachial veins of the upper arm.

PREPARATION

To get started, wash your hands, adhere to universal precautions, clean the ultrasound transducer with a germicidal solution, place a tourniquet, and apply sterile gel or surgical lubricant to the transducer. Adjust the gain and depth settings of the ultrasound system so that vessels appear black and are in the center of the ultrasound image.

Find an appropriate vein by scanning the arm in the transverse orientation, which provides a cross-sectional view of the anatomy and allows simultaneous visualization of veins, arteries, and other structures (Fig. 1). Vessels appear as circular structures, and veins are easily distinguished from arteries because veins collapse with compression. When choosing a vein, remember that a vein with a relatively large diameter is more likely to result in successful catheterization. The depth of a vein is not as important as its diameter, but longer IV catheters are needed for veins that lie more than 1 cm from the surface of the skin. Standard IV catheters are 3.2 cm long (Fig. 2). Common sizes range from 24-gauge for newborns to 14-gauge for adult patients with trauma. Angiocatheters that are 6.4 cm long are adequate for cannulating vessels that are a maximum of about 2 cm from the surface of the skin. Specialized catheters may be best for cannulation of deeper veins.

From the Department of Emergency Medicine, Hennepin County Medical Center, Minneapolis (S.J., S.S., L.C., C.W., J.H., C.R., R.P., D.P., R.R.); the Department of Emergency Medicine, West Suburban Medical Center, Oak Park, IL (L.O.); the College of Human Medicine, Michigan State University, East Lansing (B.D.); and the Department of Emergency Medicine, Women and Children's Hospital of Buffalo, Buffalo, NY (K.C.). Address reprint requests to Dr. Joing at the Department of Emergency Medicine, Hennepin County Medical Center, 701 Park Ave., MC R2, Minneapolis, MN 55415, or at scott.joing@hcmcd.org.

N Engl J Med 2012;366:e38.

Copyright © 2012 Massachusetts Medical Society.

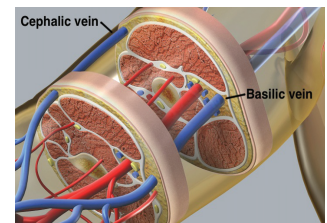


Figure 1. Cross Section of the Upper Arm.

This cross section of the upper arm shows that the positions of the basilic and cephalic veins allow for safe access with ultrasound guidance.



Figure 2. Standard IV Catheters.

Common sizes for standard IV catheters range from 24-gauge for newborns to 14-gauge for adult trauma patients. The length of a standard catheter is 3.2 cm.

PLACEMENT WITH THE TRANSVERSE TECHNIQUE

Make sure that the left side of the transducer correlates with the left side of the ultrasound image. Identify the target vein and note the depth of the vein. Clean the skin with an antiseptic swab. Insert the needle through the skin at a 45-degree angle. Advance the needle toward the vein and look for the needle tip. Since the needle is perpendicular to the ultrasound plane as it passes through the skin, it appears as just a single bright dot with posterior shadowing or a repeating artifact (Fig. 3). As you advance the needle tip, follow it by fanning or tilting the transducer in the direction that the needle is traveling. If you cannot identify the needle tip, look for compression and movement of the adjacent soft tissue and tenting of the anterior wall of the vein. Bouncing, or vibrating, the needle will enhance movement of the soft tissue adjacent to the needle and may help you identify the position of the needle tip. Watch for blood return as an indication that the needle tip has entered the vein. Decrease the angle of the needle, and advance it by an additional 1 or 2 mm to make sure that the entire needle tip and the tip of the catheter are inside the vein.

While holding the needle still, advance the catheter over the needle and into the vein. Secure the catheter in the standard fashion and flush with saline.

PLACEMENT WITH THE LONGITUDINAL TECHNIQUE

Identify the target vein and surrounding structures using the transverse view, then rotate the transducer 90 degrees to the longitudinal axis of the vein. It is crucial to know which side of the ultrasound image represents the distal vein, because that is where the needle will enter the image. Anchor your hand on the patient to keep the transducer completely still during the procedure, so you do not lose site of the vein while advancing the needle. Clean the skin with an antiseptic swab. Insert the needle through the skin at precisely the center of the long axis of the transducer, at an angle of 30 degrees, and carefully advance it within the ultrasound plane. The needle should be well visualized in the long-axis view (Fig. 4). If you can see the vein but not the needle, then the needle must be lateral to the vein. Back up and redirect the needle as necessary. Do not advance the needle unless you can visualize the tip. The anterior wall of the vein may become compressed in response to needle contact, so use a quick forward motion to puncture it. Visualize the needle tip inside the vein and watch the catheter as it is advanced off of the needle and into the vein (Fig. 5). Secure the catheter and flush with saline.

COMPLICATIONS, COMMON ERRORS, AND KEYS TO SUCCESS

Overly deep placement of the needle is a common problem, especially when the transverse technique is used. Centimeters are marked along the edges of all ultrasound images to indicate the depth of scanning in relation to the skin surface. Ergonomics is important and should not be overlooked. The patient's arm should be positioned on a flat horizontal surface, so the ultrasound images and needle movements are both in the vertical plane. Adjust the position and height of the patient and the ultrasound monitor so that you can work comfortably, without bending or stooping or having to turn your head to see the ultrasound images. When catheters do not flush well after insertion, consider checking the longitudinal view to diagnose the problem. Transducer selection is important. Linear-array transducers with high frequencies (5 to 14 MHz) are specifically made for ultrasound-guided procedures (Fig. 6).

SUMMARY

Ultrasound guidance facilitates placement of peripheral IV catheters when standard techniques fail. Learning ultrasound-guided techniques is relatively easy, especially

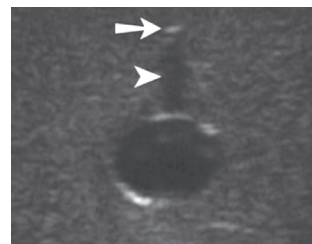


Figure 3. Transverse View of Needle and Vessel.

In this ultrasound image showing the transverse approach to IV placement, the needle tip appears as a single bright dot (arrow); posterior shadowing (arrowhead) helps to identify the tip.

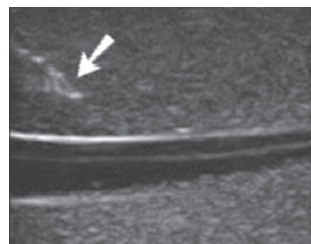


Figure 4. Longitudinal View of Needle and Vessel.

This image of the longitudinal approach to IV placement shows that the needle and catheter are in the same plane as the vein. The needle tip can also be seen (arrow).

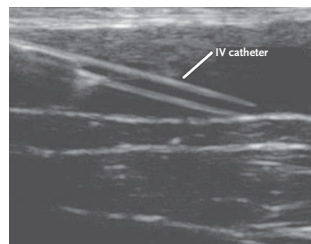


Figure 5. View of a Catheter Advanced into the Vein.

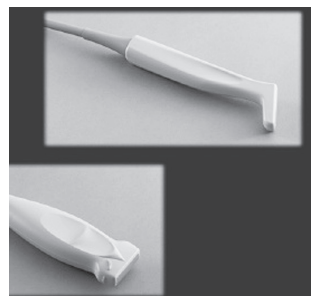


Figure 6. Transducers.

These linear-array transducers have a frequency of 5 to 13 MHz. They are ideal for ultrasound-guided vascular access.

REFERENCES

1. Keyes LE, Frazee BW, Snoey ER, Simon BC, Christy D. Ultrasound guided brachial and basilic vein cannulation in emergency department patients with difficult intravenous access. *Ann Emerg Med* 1999; 34:711-4.
2. Stein JC, Cole W, Kramer N, Quinn J. Ultrasound-guided peripheral intravenous cannulation in emergency department patients with difficult IV access. *Acad Emerg Med* 2004;11:581-2.
3. Costantino TG, Parikh AK, Satz WA, Fojtik JP. Ultrasonography-guided peripheral intravenous access versus traditional approaches in patients with difficult intravenous access. *Ann Emerg Med* 2005; 46:456-61.
4. Blaivas M, Brannam L, Fernandez E. Short-axis versus long-axis approaches for teaching ultrasound-guided vascular access on a new inanimate model. *Acad Emerg Med* 2003;10:1307-11.
5. Stone MB, Moon C, Sutijono D, Blaivas M. Needle tip visualization during ultrasound-guided vascular access: short-axis vs long-axis approach. *Am J Emerg Med* 2010;28:343-7.

Copyright © 2012 Massachusetts Medical Society.

for providers who are proficient in the placement of standard IV catheters. Small linear transducers and long IV catheters are ideal for ultrasound-guided IV catheter placement.

No potential conflict of interest relevant to this article was reported.

Disclosure forms provided by the authors are available with the full text of this article at NEJM.org.